

FOR LEASE

930 Fesler Street, El Cajon, CA 92020



5,836 SqFt with Fence Yard & Dock Platform loading

For more information contact:

Robbie Cornell
robbie@tollercornell.com
CA Lic # 01702034

Mick Toller
mick@tollercornell.com
CA Lic # 01355557

619-456-2380



TOLLER CORNELL
COMMERCIAL REAL ESTATE

www.tollercornell.com

The information contained herein has been obtained from sources we deem reliable. While we have no reason to doubt its accuracy, we do not guarantee it.

FOR LEASE

930 Fesler Street, El Cajon, CA 92020

Property Type: High quality industrial suite

Construction: Concrete tilt-up

Building SF: Approx. 5,836 SF.

Office Area: Reception Area, 2 Private offices, 2 Restrooms

Building Power: 200 Amps 3 phase

Loading: Two 12W x 14H Grade level loading door,
One 12W x 10H Dock high loading doors

Zoning: City of El Cajon M-Zone (Manufacturing)

Additional Features: Fenced yard area, dock platform area at rear of building

Location: This property is located just off Fletcher Parkway and is in close proximity to HWY 52, 67, 125 and interstate 8.

Lease Rate: \$1.65 per SF Gross



For more information contact:

Robbie Cornell
robbie@tollercornell.com
CA Lic # 01702034

Mick Toller
mick@tollercornell.com
CA Lic # 01355557

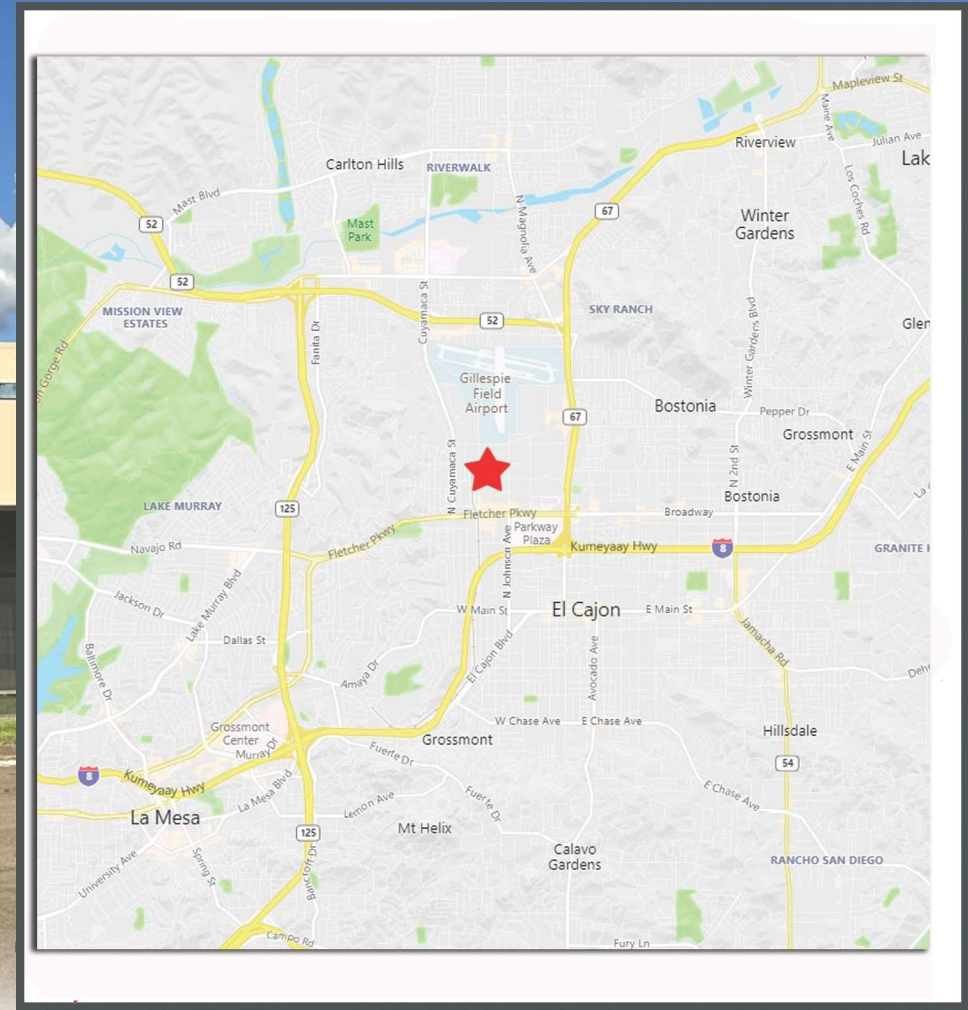
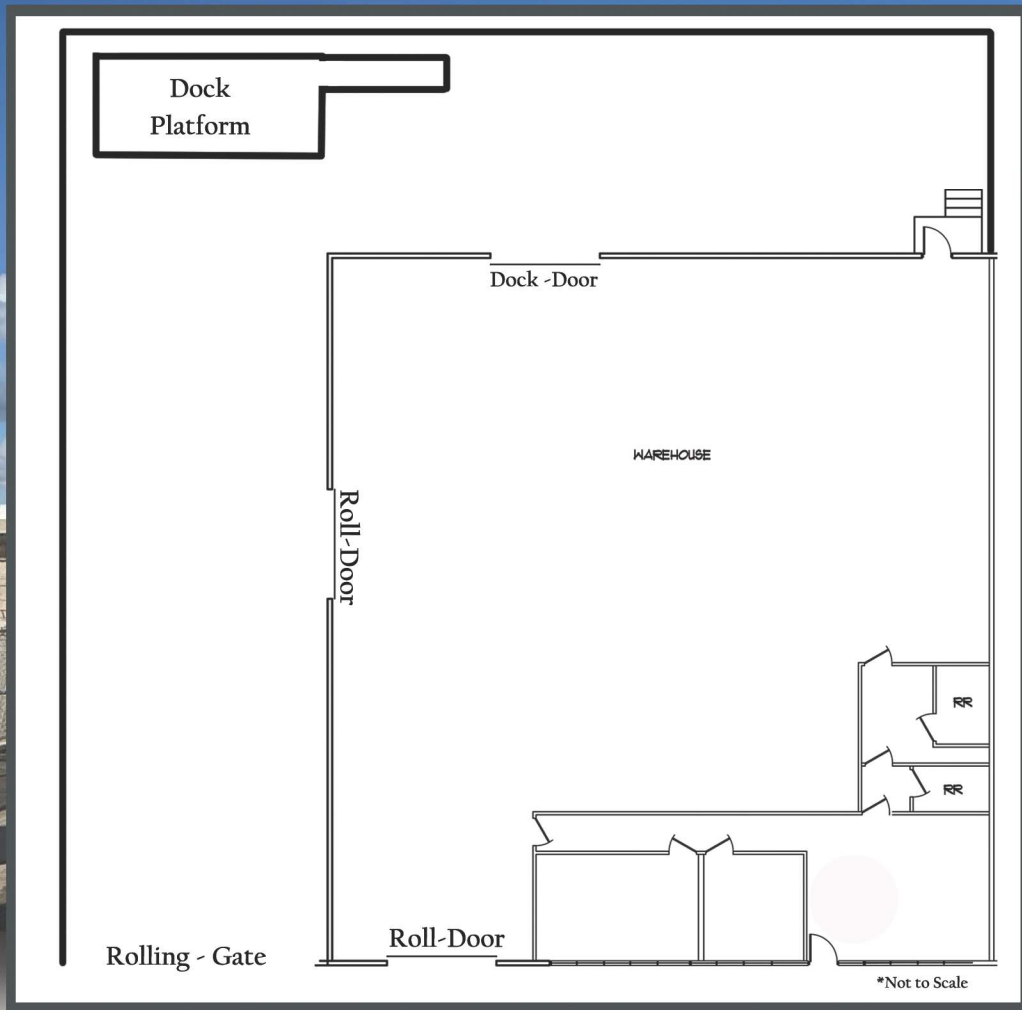
619-456-2380



TOLLER CORNELL
COMMERCIAL REAL ESTATE
www.tollercornell.com

FOR LEASE

930 Fesler Street, El Cajon, CA 92020



For more information contact:

Robbie Cornell
robbie@tollercornell.com
CA Lic # 01702034

Mick Toller
mick@tollercornell.com
CA Lic # 01355557

619-456-2380



TOLLER CORNELL
COMMERCIAL REAL ESTATE

www.tollercornell.com