

FOR SUBLEASE

10035 Marathon Parkway, Lakeside, Ca 92040



11,403 SqFt Freestanding Building with Fenced Parking Area

For more information contact:

Robbie Cornell
robbie@tollercornell.com
CA Lic # 01702034

Mick Toller
mick@tollercornell.com
CA Lic # 01355557

619-456-2380



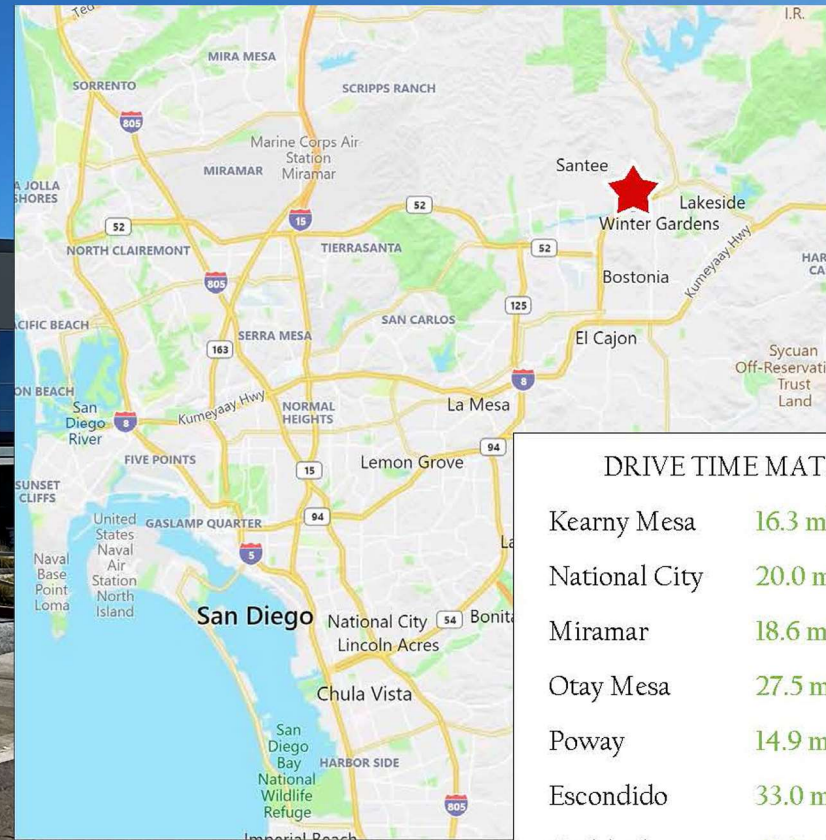
TOLLER CORNELL
COMMERCIAL REAL ESTATE

FOR SUBLEASE

10035 Marathon Parkway, Lakeside, Ca 92040

Property Features

- Total Building Square Footage: 11,403 SF
- 1,164 SF Office area
- Power: 1200 amps / 208/120v / 3 phase
- Warehouse Clear Height: 24'
- Vehicle Parking: 36 spaces
- Freeway Visible from Southbound Hwy 67
- Location: Just off Highway 67 and Riverford Road in Lakeside. 4 minutes from Hwy 52 / Hwy 67 junction
- Sublease term through July 31, 2026
- Lease Rate: \$1.45 per SF (NNN = approx. \$.32 per)



For more information contact:

Robbie Cornell
robbie@tollercornell.com
CA Lic # 01702034

Mick Toller
mick@tollercornell.com
CA Lic # 01355557

619-456-2380

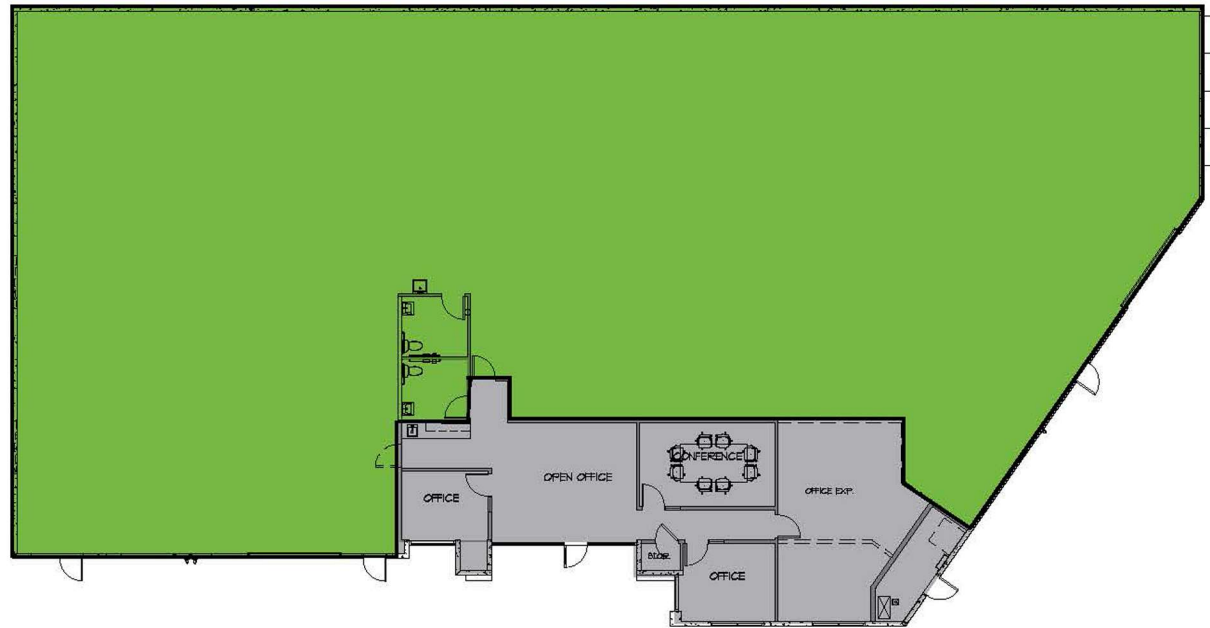


TOLLER CORNELL
COMMERCIAL REAL ESTATE

FOR SUBLEASE

10035 Marathon Parkway, Lakeside, Ca 92040

Floor Plan



1,164 SF of Improved Area

For more information contact:

Robbie Cornell
robbie@tollercornell.com
CA Lic # 01702034

Mick Toller
mick@tollercornell.com
CA Lic # 01355557

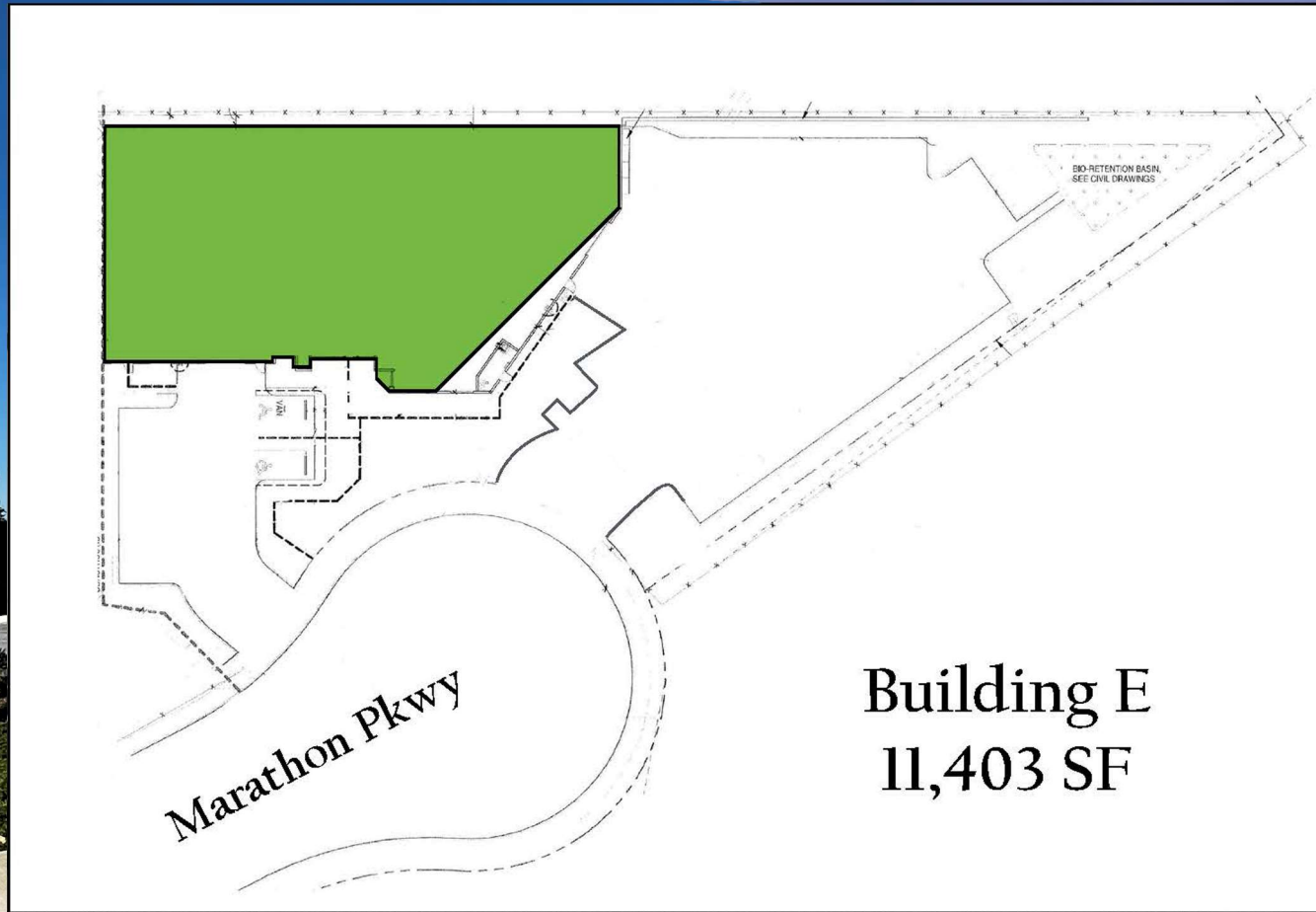
619-456-2380



TOLLER CORNELL
COMMERCIAL REAL ESTATE

FOR SUBLEASE

10035 Marathon Parkway, Lakeside, Ca 92040



Building E
11,403 SF

For more information contact:

Robbie Cornell
robbie@tollercornell.com
CA Lic # 01702034

Mick Toller
mick@tollercornell.com
CA Lic # 01355557

619-456-2380



TOLLER CORNELL
COMMERCIAL REAL ESTATE