

# FOR LEASE

1365 North Johnson Ave., Suite 103 & 104, El Cajon, CA 92020



## 4,038 SqFt

For more information contact:

Robbie Cornell  
robbie@tollercornell.com  
CA Lic # 01702034

Mick Toller  
mick@tollercornell.com  
CA Lic # 01355557

### 619-456-2380



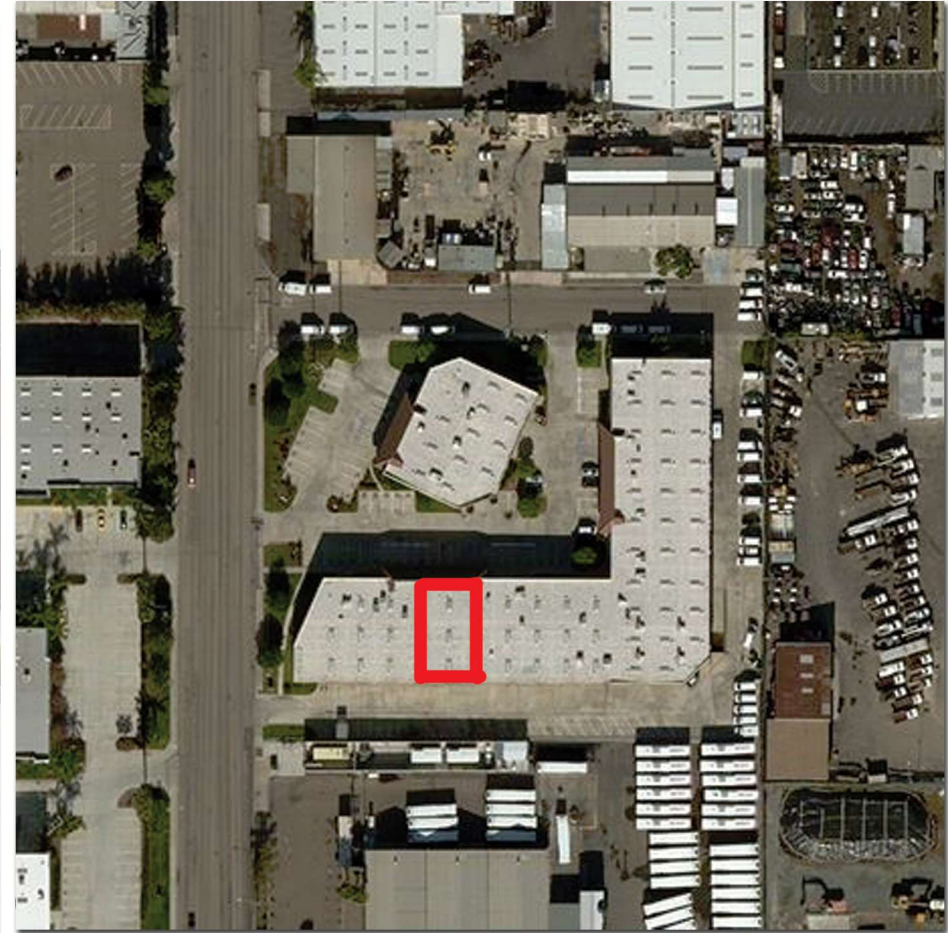
**TOLLER CORNELL**  
COMMERCIAL REAL ESTATE

The information contained herein has been obtained from sources we deem reliable. While we have no reason to doubt its accuracy, we do no guarantee it

# FOR LEASE

1365 North Johnson Ave., Suite 103 & 104, El Cajon, CA 92020

**Property Type:** High Quality Industrial Suite  
**Construction:** Concrete Tilt-Up  
**Available:** Approx. 4,038 SqFt  
**Office Area:** Approx. 50% Office. Lanlord will Demo to Suit.  
**Clear Height:** Approx. 20'  
**Fire System:** Sprinklers  
**Suite Power:** Two 3-Phase Panels  
**Loading:** Two Rear Loaded Grade Level Doors  
**Zoning:** City of El Cajon Manufacturing Zone (M Zone)  
**Additional Features:** Close Proximity to Parkway Plaza Mall, Resturants, Public Tranportation other Amenities  
**Location:** This Property is minutes from Highway 67 Freeway Entrance at Fletcher Parkway with Close Proximity to Interstate 8 and Highway 52 & 125.  
**Lease Rate:** \$1.30 per SF Industrial Gross



For more information contact:

**Robbie Cornell**  
robbie@tollercornell.com  
CA Lic # 01702034

**Mick Toller**  
mick@tollercornell.com  
CA Lic # 01355557

619-456-2380

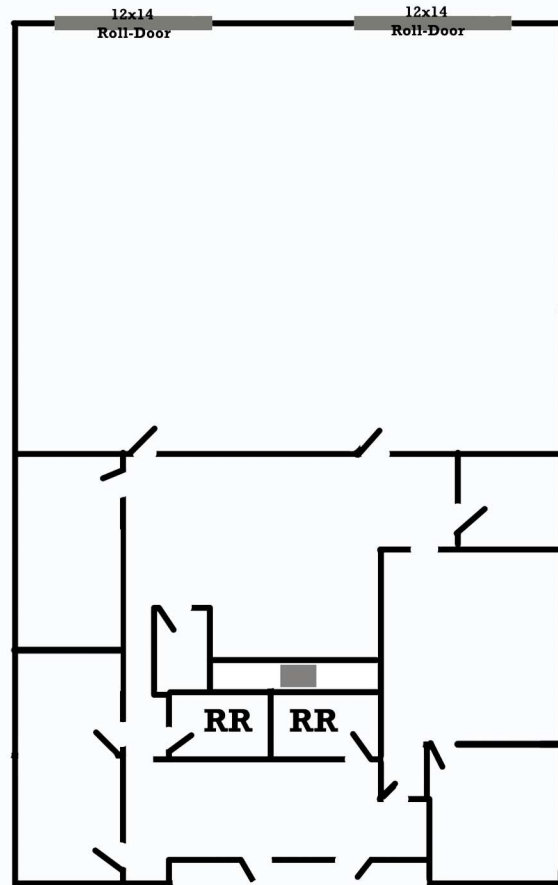


**TOLLER CORNELL**  
COMMERCIAL REAL ESTATE



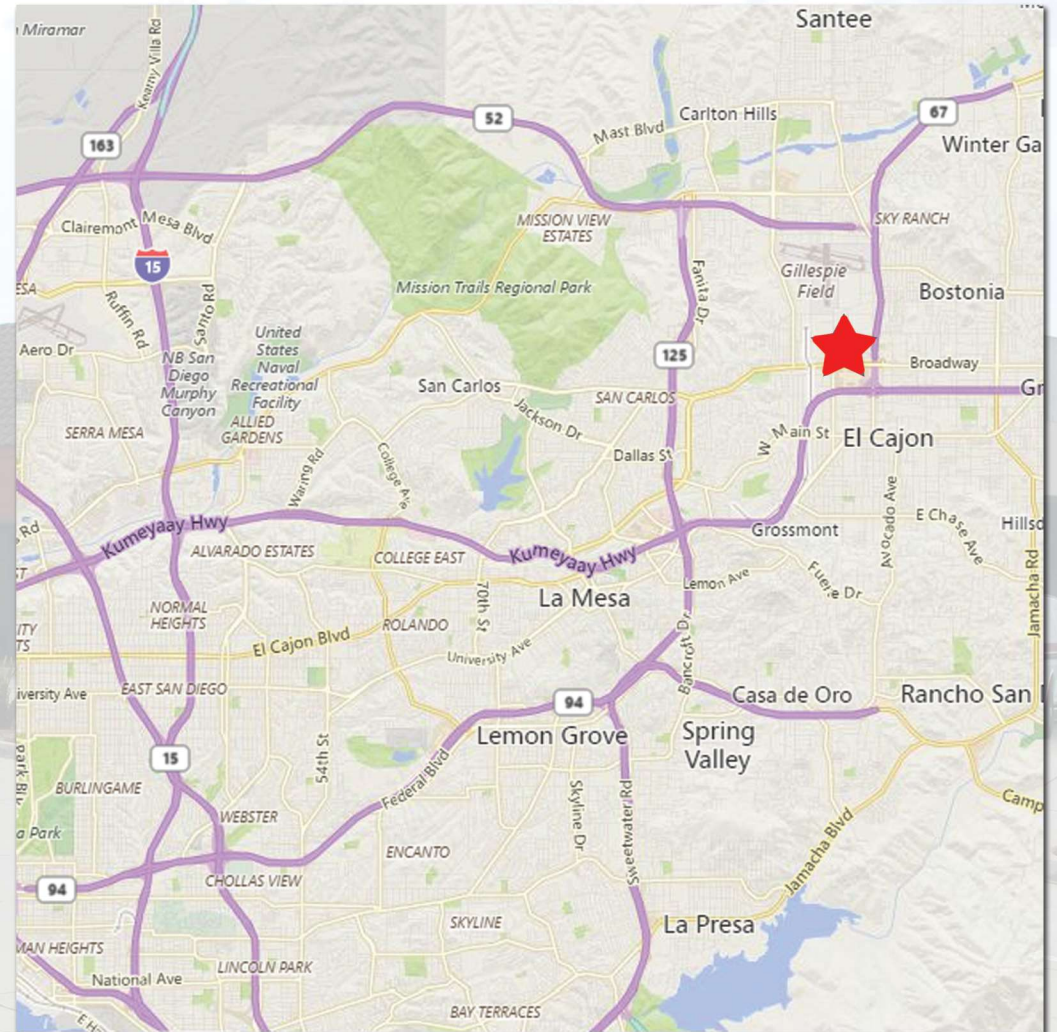
# FOR LEASE

1365 North Johnson Ave., Suite 103 & 104, El Cajon, CA 92020



1365 North Johnson Ave., Suite 103 & 104  
El Cajon, CA 92020

\*Not to Scale



For more information contact:

Robbie Cornell  
robbie@tollercornell.com  
CA Lic # 01702034

Mick Toller  
mick@tollercornell.com  
CA Lic # 01355557

619-456-2380



**TOLLER CORNELL**  
COMMERCIAL REAL ESTATE