

FOR SALE

5,120 SqFt on 20,274 SqFt Lot



10019-10023 Maine Ave., Lakeside, CA 92040

For more information contact:

Robbie Cornell
robbie@tollercornell.com
CA Lic # 01702034

Mick Toller
mick@tollercornell.com
CA Lic # 01355557

619-456-2380



TOLLER CORNELL
COMMERCIAL REAL ESTATE

FOR SALE

5,120 SqFt on 20,274 SqFt Lot

Property Type: Commercial building with land

Building SF: Approx. 4,032 SqFt with approx. 1,088 SqFt additional enclosed storage space

Land Area: Approx. 20,274 SqFt on 4 parcels

APN #: 394-043-14-00, 394-043-15-00, 394-043-05-00, 394-043-06-00

Building Power: 4 seprate meters for multi-tenant use

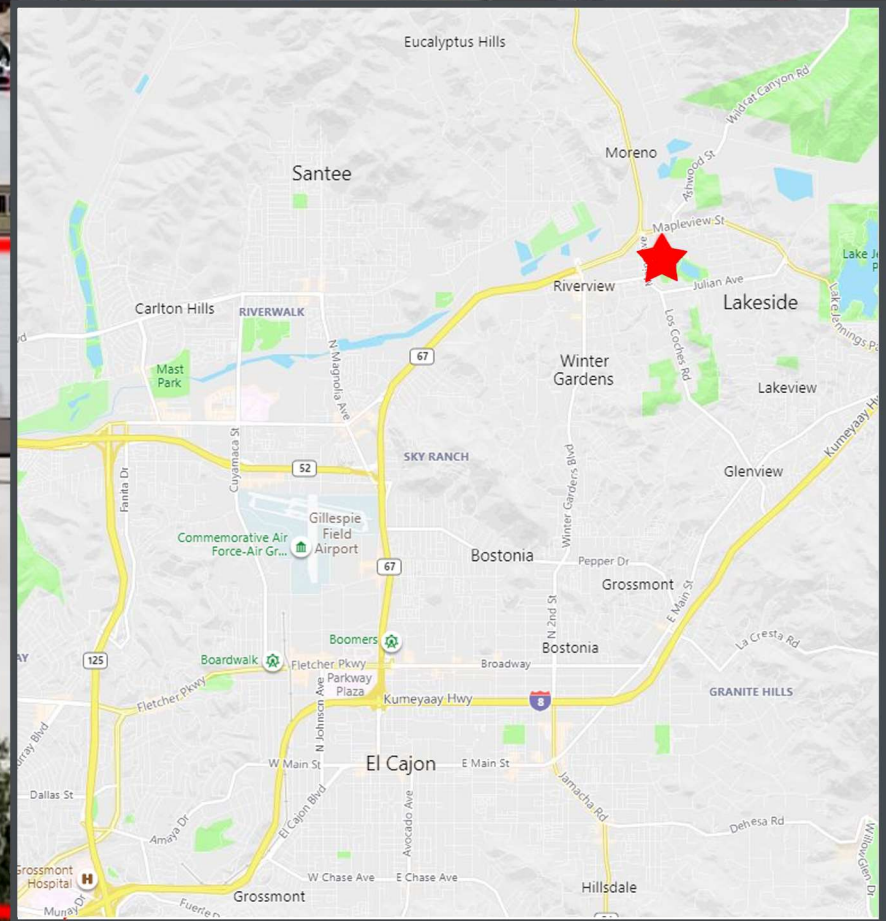
Loading: Property has drive through capbility connecting Maine Ave., and Vine Street

Zoning: County of San Diego C-36

Additional Features: Concrete driveways and parking area. Gated entry points on Maine Ave., and Vine Street. Rental income inplace- call Agent for details

Location: Less than 1/4 mile off HWY 67 Maplevue St.

Sale Price: \$1,295,000



10019-10023 Maine Ave., Lakeside, CA 92040

For more information contact:

Robbie Cornell
robbie@tollercornell.com
CA Lic # 01702034

Mick Toller
mick@tollercornell.com
CA Lic # 01355557

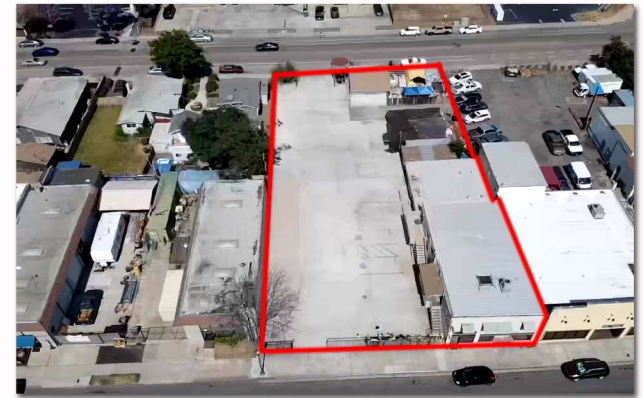
619-456-2380



TOLLER CORNELL
COMMERCIAL REAL ESTATE

FOR SALE

5,120 SqFt on 20,274 SqFt Lot



10019-10023 Maine Ave., Lakeside, CA 92040

For more information contact:

Robbie Cornell
robbie@tollercornell.com
CA Lic # 01702034

Mick Toller
mick@tollercornell.com
CA Lic # 01355557

619-456-2380



TOLLER CORNELL
COMMERCIAL REAL ESTATE