

FOR SUB-LEASE 920 Fesler Street, El Cajon, CA 92020



5,796 SqFt with Dock Loading

For more information contact:

Robbie Cornell
robbie@tollercornell.com
CA Lic # 01702034

Mick Toller
mick@tollercornell.com
CA Lic # 01355557

619-456-2380



TOLLER CORNELL
COMMERCIAL REAL ESTATE

www.tollercornell.com

FOR SUB-LEASE

920 Fesler Street, El Cajon, CA 92020

Property Type: High quality industrial suite

Construction: Concrete tilt-up

Building SF: Approx. 5,796 SF.

Office Area: Approx. 22% Configured as: Large Reception / Bull Pen area, 4 Private offices, , Kitchenete, 1 Restrooms and a Storage room.

Building Power: 200 Amps 3 phase

Loading: One 12W x 14H Grade level loading door, One 12W x 10H Dock high loading doors

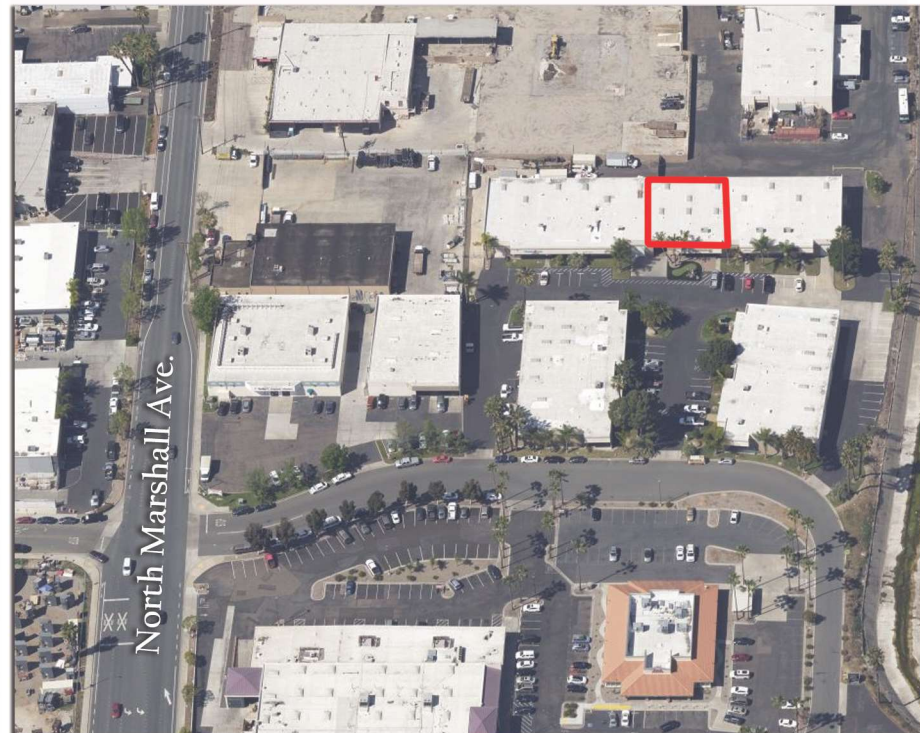
Zoning: City of El Cajon M-Zone (Manufacturing)

Additional Features: Office area equipped with LED Lighting throughout, Upgrade office area doors. High quality window blinds, Upgraded LED lighting in warehouse area, Fully insulated warehouse ceilings.

Location: This property is located just off Fletcher Parkway and is in close proximity to HWY 52, 67 ,125 and interstate 8.

Sub-Lease Term: Through December 31, 2027

Sub-Lease Rate: Call Agent for Details



For more information contact:

Robbie Cornell
robbie@tollercornell.com
CA Lic # 01702034

Mick Toller
mick@tollercornell.com
CA Lic # 01355557

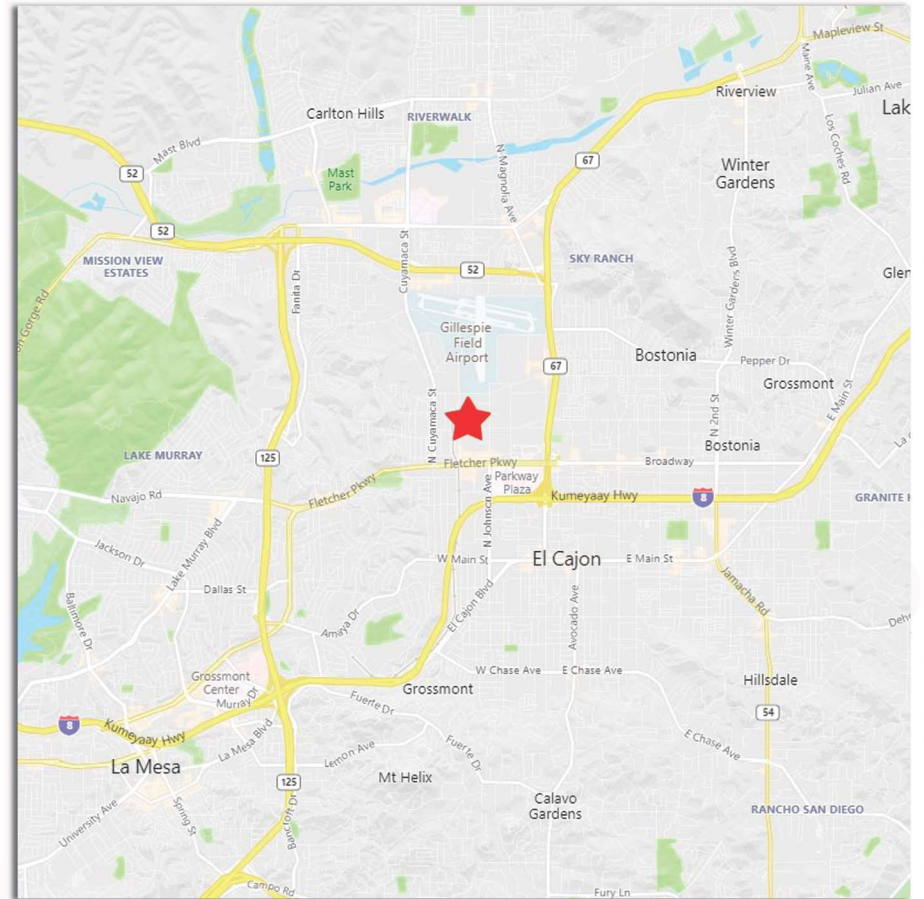
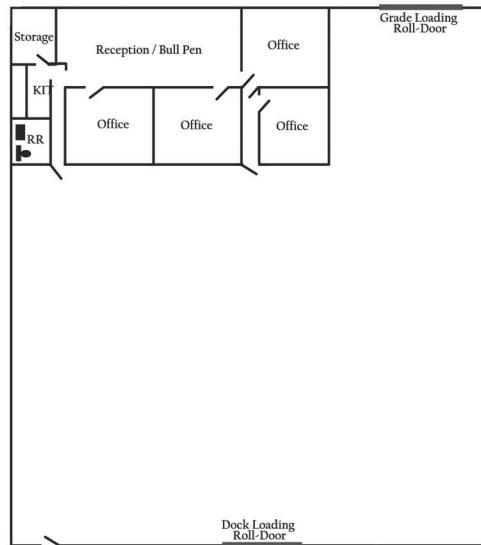
619-456-2380



TOLLER CORNELL
COMMERCIAL REAL ESTATE

www.tollercornell.com

FOR SUB-LEASE 920 Fesler Street, El Cajon, CA 92020



For more information contact:

Robbie Cornell
robbie@tollercornell.com
CA Lic # 01702034

Mick Toller
mick@tollercornell.com
CA Lic # 01355557

619-456-2380



TOLLER CORNELL
COMMERCIAL REAL ESTATE

www.tollercornell.com